



2017 BASKETBALL

CONFORMS
TO NFHS
REGULATIONS



FULLY
REVERSIBLE



9-INCH
(YOUTH INSEAM GRADED)
PRO CUT

SLAM DUNK JERSEY

1170 1171



Color side is 100% polyester wicking knit • White side is 100% polyester tricot mesh • Fully reversible • Self-fabric mitered V-neck collar • Contrast color piping in shoulder seam • Each layer has contrast color side inserts • Each layer hemmed separately for embellishment • Outside locker label • Conforms to NFHS regulations.

1170 Adult: S-3XL List Price 25.00 (Upcharge for 2XL-3XL)

1171 Youth: S-L List Price 23.00



SLAM DUNK SHORT

1175 1176



Color side is 100% polyester wicking knit • White side is 100% polyester tricot mesh • Fully reversible • Full-cut • Covered elastic waistband with inside drawcord • Each layer has contrast color side inserts • Each layer hemmed separately for embellishment • 9-inch inseam • Youth inseam graded.

1175 Adult: S-3XL List Price 25.00 (Upcharge for 2XL-3XL)

1176 Youth: S-L List Price 23.00

CONFORMS
TO NFHS
REGULATIONS



FULLY
REVERSIBLE



9-INCH
(YOUTH INSEAM GRADED)
PRO CUT

COORDINATING LADIES REVERSIBLE JERSEY, STYLE 687 PG. 16

REVERSIBLE WICKING GAME JERSEY

685 686



Color side is 100% polyester wicking knit • White side is 100% polyester wicking tricot • Fully reversible • Self-fabric V-neck collar • Each layer has two contrast color V-shaped side panels • Each layer hemmed separately for embellishment • Outside locker label • Conforms to NFHS regulations.

685 Adult: S-3XL List Price 32.40 (Upcharge for 2XL-3XL)

686 Youth: S-L List Price 31.00



REVERSIBLE WICKING GAME SHORT

691 692



Color side is 100% polyester wicking knit • White side is 100% polyester wicking tricot • Fully reversible • Full-cut • Covered elastic waistband with inside drawcord • Each layer has two contrast color V-shaped side panels • 9-inch inseam • Youth inseam graded.

691 Adult: S-3XL List Price 34.50 (Upcharge for 2XL-3XL)

692 Youth: S-L List Price 33.20



FULLY REVERSIBLE

9-INCH (YOUTH INSEAM GRADED) PRO CUT



1161

1163

HOOK SHOT REVERSIBLE JERSEY 1161 1162

Two layers of 100% polyester wicking knit • Colored side panel and yoke features Digi Camo printed inserts • Printed inserts are roller printed to reduce chance of dye migration • Fully reversible • Self-fabric mitered V-neck collar • Each layer hemmed separately for embellishment • Outside locker label.

1161 Adult: S-3XL List Price 25.00 (Upcharge for 2XL-3XL)
1162 Youth: S-L List Price 23.00



BACK



BACK

HOOK SHOT REVERSIBLE SHORT 1163 1164

Two layers of 100% polyester wicking knit • Colored side features Digi Camo printed side inserts • Printed inserts are roller printed to reduce chance of dye migration • Fully reversible • Full-cut • Each layer hemmed separately for embellishment • 9-inch inseam • Youth inseam graded.

1163 Adult: S-3XL List Price 25.00 (Upcharge for 2XL-3XL)
1164 Youth: S-L List Price 23.00

CONFORMS TO NFHS REGULATIONS



9-INCH (YOUTH INSEAM GRADED) PRO CUT

BASELINE JERSEY

1060 1061



100% polyester wicking smooth knit • Odor resistant • Heat sealed label • Self-fabric collar • Conforms to NFHS regulations.

1060 Adult: S-3XL List Price 17.70 (Upcharge for 2XL-3XL)
1061 Youth: S-L List Price 15.60



BASELINE SHORT

1065 1066



100% polyester wicking smooth knit • Odor resistant • Full-cut • Heat sealed label • Covered elastic waistband with inside drawcord • 9-inch inseam • Youth inseam graded.

1065 Adult: S-3XL List Price 15.90 (Upcharge for 2XL-3XL)
1066 Youth: S-L List Price 13.90

CONFORMS TO NFHS REGULATIONS



9-INCH (YOUTH INSEAM GRADED) PRO CUT

TRIPLE-DOUBLE GAME JERSEY

1040 1041



100% polyester wicking knit with 100% polyester wicking Duo Knit inserts • Heat sealed label • Rib-knit collar • Contrast color side inserts • Conforms to NFHS regulations.

1040 Adult: S-3XL List Price 19.90 (Upcharge for 2XL-3XL)
1041 Youth: S-L List Price 17.90



TRIPLE-DOUBLE GAME SHORT

1045 1046



100% polyester wicking knit with 100% polyester wicking Duo Knit inserts • Full-cut • Covered elastic waistband with inside drawcord • Contrast color side inserts • 9-inch inseam • Youth inseam graded.

1045 Adult: S-3XL List Price 21.90 (Upcharge for 2XL-3XL)
1046 Youth: S-L List Price 19.90

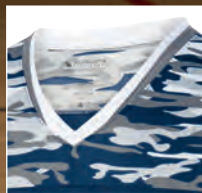


1115

1117



BACK



TWO-COLOR
V-NECK COLLAR



CONFORMS
TO NFHS
REGULATIONS

1805
PG. 22

9-INCH
(YOUTH
INSEAM
GRADED)
PRO CUT

BASKETBALL

MOD CAMO GAME JERSEY

1115

1116



100% polyester propelit micromesh wicking knit body with 100% polyester wicking printed knit yoke
• Yoke features Mod Camo print • Roller printed yoke to reduce chance of dye migration • Pad print label • Two-color V-neck collar • Conforms to NFHS regulations.

1115 Adult: S-2XL List Price 23.90 (Upcharge for 2XL)
1116 Youth: S-L List Price 21.90



BLACK/ GRAPHITE/ WHITE | WHITE/ GRAPHITE/ WHITE | RED/ GRAPHITE/ WHITE | ROYAL/ GRAPHITE/ WHITE | NAVY/ GRAPHITE/ WHITE | ORANGE/ GRAPHITE/ WHITE | MAROON/ GRAPHITE/ WHITE | PURPLE/ GRAPHITE/ WHITE | DARK GREEN/ GRAPHITE/ WHITE

MOD CAMO GAME SHORT

1117

1118



100% polyester propelit micromesh wicking knit body with 100% polyester wicking printed knit bottom leg insert • Inserts feature Mod Camo print • Roller printed inserts to reduce chance of dye migration • Pad print label • Full-cut • Contrast color elastic waistband with inside drawcord • Contrast color piping • 9-inch inseam • Youth inseam graded • Conforms to NFHS regulations.

1117 Adult: S-2XL List Price 21.90 (Upcharge for 2XL)
1118 Youth: S-L List Price 19.90

1180



CONFORMS TO NFHS REGULATIONS

PINHOLE MESH INSERT



1185



9-INCH (YOUTH INSEAM GRADED) PRO CUT



PINHOLE MESH BACK



COORDINATING LADIES/GIRLS, STYLE 1182|1183 PG. 14

WINNING STREAK GAME JERSEY

1180

1181



100% polyester wicking knit • 92% polyester/8% spandex pinhole mesh side inserts • Heat sealed label • Self-fabric mitered V-neck collar • Contrast color stripes on sides

• Conforms to NFHS regulations.

1180 Adult: S-3XL List Price 19.50 (Upcharge for 2XL-3XL)

1181 Youth: XS-L List Price 17.50



WINNING STREAK GAME SHORT

1185

1186



100% polyester wicking knit • 92% polyester/8% spandex pinhole mesh inserts • Full-cut • Covered elastic waistband with inside drawcord • Contrast color stripes on sides • 9-inch inseam • Youth inseam graded • Conforms to NFHS regulations.

• Conforms to NFHS regulations.

1185 Adult: S-3XL List Price 19.90 (Upcharge for 2XL-3XL)

1186 Youth: XS-L List Price 17.90



PINHOLE MESH INSERT & BACK

WINNING STREAK LONG SLEEVE JERSEY

1085

1086



100% polyester wicking knit • 92% polyester/8% spandex pinhole mesh back and inserts • Heat sealed label • Self-fabric collar • Set-in sleeves with self-fabric cuffs • Contrast color piping on shoulder and front • Contrast color inserts on front.

1085 Adult: S-3XL List Price 29.00 (Upcharge for 2XL-3XL)

1086 Youth: S-L List Price 27.00



CONFORMS
TO NFHS
REGULATIONS



1713

1716

9-INCH
(YOUTH
INSEAM
GRADED)
PRO CUT



ROSTER SOCK

6097 | 6096
ROSTER SOCK
FOR FULL DESCRIPTION,
SEE PG. 35



COORDINATING LADIES, STYLE 1714 PG. 15

BLOCK OUT JERSEY

1712

1713



100% polyester wicking knit • Pad print label • Self-fabric V-neck collar • Contrast color V-notch side panel • Conforms to NFHS regulations.

1712

Adult: S-2XL

List Price 15.90 (Upcharge for 2XL)

1713

Youth: S-L

List Price 13.90



BLOCK OUT SHORT

1715

1716



100% polyester wicking knit • Pad print label • Contrast color side panel with diamond shaped insert • Full-cut • Covered elastic waistband with inside drawcord

• 9-inch inseam • Youth inseam graded.

1715

Adult: S-2XL

List Price 15.90 (Upcharge for 2XL)

1716

Youth: S-L

List Price 13.90

BLOCK OUT LONG SLEEVE JERSEY

1717

1718



100% polyester wicking knit • Pad print label • Contrast self-fabric collar • Contrast color V-notch side panel • Set-in sleeves with self-fabric cuffs.

1717

Adult: S-2XL

List Price 21.00 (Upcharge for 2XL)

1718

Youth: S-L

List Price 19.00



ULTRA GEO COLLECTION

FAST BREAK LONG SLEEVE JERSEY

1726

1727



100% polyester wicking knit with printed sleeves and collar • Pad print label • Self-fabric collar • Raglan sleeves with self-fabric cuffs.

1726

Adult: S-3XL

List Price 23.00 (Upcharge for 2XL-3XL)

1727

Youth: S-L

List Price 21.00



1726

1420
PG. 18



WHITE ULTRA GEO PRINT

Colors Available with White Print



GRAPHITE/
BLACK/
WHITE
PRINT

GRAPHITE/
NAVY/
WHITE
PRINT



BLACK ULTRA GEO PRINT

Colors Available with Black Print



GRAPHITE/
BLACK/
BLACK
PRINT

GRAPHITE/
RED/
BLACK
PRINT

GRAPHITE/
ROYAL/
BLACK
PRINT



1795/1796

ELEVATE WICKING
T-SHIRT



1792/1793

LADIES ELEVATE
WICKING T-SHIRT

To see our full Geo Collection, visit us
online at www.augustasportswear.com

1726/1727

FAST BREAK LONG
SLEEVE JERSEY



CONFORMS
TO NFHS
REGULATIONS

FAST BREAK GAME JERSEY

1720 1721



100% polyester wicking knit • 100% polyester printed wicking knit side panel • Pad print label • Self-fabric V-neck collar • Contrast color printed side panels • Conforms to NFHS regulations.

1720 Adult: S-2XL List Price 15.90 (Upcharge for 2XL)
1721 Youth: XS-L List Price 13.90



BLACK/ GRAPHITE
BLACK PRINT
WHITE/ GRAPHITE
BLACK PRINT
RED/ GRAPHITE
BLACK PRINT
ROYAL/ GRAPHITE
BLACK PRINT
NAVY/ GRAPHITE
BLACK PRINT
GRAPHITE/ GRAPHITE
BLACK PRINT

1720



1724

9-INCH
(YOUTH
INSEAM
GRADED)
PRO CUT

BASKETBALL

AUGUSTASPORTSWEAR.COM



1722/1723

LADIES FAST BREAK
RACERBACK JERSEY
(See page 14.)

1724/1725

FAST BREAK GAME SHORT

FAST BREAK GAME SHORT

1724 1725



100% polyester wicking knit • 100% polyester printed wicking knit side panel • Pad print label • Contrast color printed side panels • Full-cut • Covered elastic waistband with inside drawcord • 9-inch inseam • Youth inseam graded.

1724 Adult: S-2XL List Price 15.90 (Upcharge for 2XL)
1725 Youth: XS-L List Price 14.50



TRICOT MESH REVERSIBLE TANK

197

198



Two layers of 100% polyester tricot mesh • Fully reversible • Bottom hem finished separately for embellishment • Outside locker label.

197

Adult: S-3XL

List Price 14.50 (Upcharge for 2XL-3XL)

198

Youth: S-L

List Price 13.40



REVERSIBLE MINI MESH LEAGUE TANK

136

137



Two layers of 100% polyester mini mesh • Fully reversible • Bottom hem finished separately for embellishment • Outside locker label.

136

Adult: S-3XL

List Price 16.00 (Upcharge for 2XL-3XL)

137

Youth: XS-L

List Price 13.80



MINI MESH SINGLET

133

134



One layer of 100% polyester mini mesh.

133

Adult: S-3XL

List Price 9.50 (Upcharge for 2XL-3XL)

134

Youth: S-L

List Price 8.20



REVERSIBLE TANK

Moisture management meets dual functionality

COORDINATING LADIES, STYLE 147 PG. 17

REVERSIBLE WICKING TANK

148

149



Two layers of 100% polyester wicking knit • Fully reversible • Bottom hem finished separately for embellishment • Outside locker label.

148

Adult: S-3XL

List Price 12.50 (Upcharge for 2XL-3XL)

149

Youth: S-L

List Price 11.50



BLACK/
WHITE



RED/
WHITE



ROYAL/
WHITE



COLUMBIA
BLUE/
WHITE



NAVY/
WHITE



ORANGE/
WHITE



MAROON/
WHITE



GOLD/
WHITE



PURPLE/
WHITE



KELLY/
WHITE



DARK
GREEN/
WHITE



LIME/
WHITE



GRAPHITE/
WHITE

BASKETBALL



148

148



FULLY REVERSIBLE
JERSEY

1420
PG. 18



SHOOTER SHIRT

203

204



50% polyester/50% cotton jersey knit • Rib-knit collar.

203 Adult: S-3XL

List Price 9.00 (Upcharge for 2XL-3XL)

204 Youth: S-L

List Price 7.40

*Available in 3XL



POLY/COTTON ATHLETIC TANK

180

181



50% polyester/50% cotton jersey knit
• Self-fabric binding at neck and armholes.

180 Adult: S-3XL

List Price 9.80 (Upcharge for 2XL-3XL)

181 Youth: S-L

List Price 7.30



PERFORMANCE FABRIC

Wicks away moisture to keep players dry & comfortable

WICKING LONG SLEEVE WARMUP SHIRT

4600



100% polyester wicking mesh • Heat sealed label
• Tipped rib-knit lap-over collar • Contrast color accent piping on front shoulder • Contrast color sleeve and side inserts • Set-in sleeves • Self-fabric cuffs.

4600 Adult: XS-3XL

List Price 29.40 (Upcharge for 2XL-3XL)





9-INCH
(YOUTH
INSEAM
GRADED)

7-INCH
(YOUTH
INSEAM
GRADED)

**MINI MESH
LEAGUE SHORT**

738

739

733

734



Two layers of 100% polyester mini mesh • Elastic waistband with inside drawcord • 9-inch inseam on 738/739 • 7-inch inseam on 733/734 • Youth inseam graded.

- | | | |
|------------|--------------|---|
| 738 | Adult: S-3XL | List Price 13.50 (Upcharge for 2XL-3XL) |
| 739 | Youth: S-L | List Price 12.20 |
| 733 | Adult: S-3XL | List Price 13.00 (Upcharge for 2XL-3XL) |
| 734 | Youth: XS-L | List Price 12.20 |



9-INCH
(YOUTH
INSEAM
GRADED)
PRO CUT

7-INCH
(YOUTH
INSEAM
GRADED)

**TRICOT MESH SHORT/
TRICOT LINED**

848

849

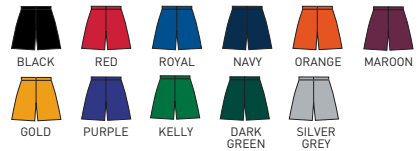
842

843



Outer layer of 100% polyester tricot mesh • Inner layer of 100% polyester tricot lining • Full-cut on 848/849 only • Elastic waistband with inside drawcord • 9-inch inseam on 848/849 • 7-inch inseam on 842/843 • Youth inseam graded.

- | | | |
|------------|--------------|---|
| 848 | Adult: S-5XL | List Price 13.00 (Upcharge for 2XL-5XL) |
| 849 | Youth: S-L | List Price 11.90 |
| 842 | Adult: S-5XL | List Price 11.00 (Upcharge for 2XL-5XL) |
| 843 | Youth: S-L | List Price 9.90 |



9-INCH
(YOUTH
INSEAM
GRADED)
PRO CUT

7-INCH
(YOUTH
INSEAM
GRADED)
PRO CUT

**WICKING MESH
ATHLETIC SHORT**

802

809

805

806



100% polyester wicking mesh • Full-cut • Covered elastic waistband with inside drawcord • 9-inch inseam on 802/809 • 7-inch inseam on 805/806

• Youth inseam graded.

- | | | |
|------------|--------------|---|
| 802 | Adult: S-4XL | List Price 11.90 (Upcharge for 2XL-4XL) |
| 809 | Youth: S-L | List Price 10.90 |
| 805 | Adult: S-3XL | List Price 11.40 (Upcharge for 2XL-3XL) |
| 806 | Youth: S-L | List Price 10.40 |





CONFORMS TO NFHS REGULATIONS

1182



RACERBACK



1185

PINHOLE MESH INSERT



9-INCH (YOUTH INSEAM GRADED) PRO CUT

COORDINATING ADULT/YOUTH, STYLE 1180/1181 PG. 6

LADIES WINNING STREAK RACERBACK JERSEY

1182 1183



100% polyester wicking knit • 92% polyester/8% spandex pinhole mesh side inserts • Ladies' fit • Heat sealed label • Self-fabric mitered V-neck collar • Contrast color stripes on sides • Racerback styling • Conforms to NFHS regulations.

1182 Ladies: S-2XL List Price 17.50 (Upcharge for 2XL)
1183 Girls: S-L List Price 15.50



WINNING STREAK GAME SHORT

1185 1186

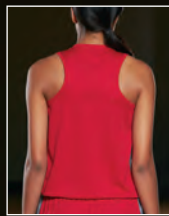


100% polyester wicking knit • 92% polyester/8% spandex pinhole mesh inserts • Full-cut • Covered elastic waistband with inside drawcord • Contrast color stripes on sides • 9-inch inseam • Youth inseam graded • Conforms to NFHS regulations.

1185 Adult: S-3XL List Price 19.90 (Upcharge for 2XL-3XL)
1186 Youth: XS-L List Price 17.90

CONFORMS TO NFHS REGULATIONS

1722

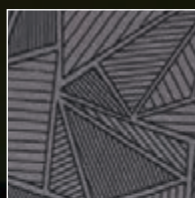


RACERBACK

1724

9-INCH (YOUTH INSEAM GRADED) PRO CUT

ULTRA GED PRINT



COORDINATING PRINTED STYLES, PG. 8

LADIES FAST BREAK RACERBACK JERSEY

1722 1723



100% polyester wicking knit • 100% polyester printed wicking knit side panel • Ladies' fit • Pad print label • Self-fabric mitered V-neck collar • Contrast color printed side panels • Racerback styling • Conforms to NFHS regulations.

1722 Ladies: S-2XL List Price 15.90 (Upcharge for 2XL)
1723 Girls: S-L List Price 13.90



FAST BREAK GAME SHORT

1724 1725



100% polyester wicking knit • 100% polyester printed wicking knit side panel • Pad print label • Contrast color printed side panels • Full-cut • Covered elastic waistband with inside drawcord • 9-inch inseam • Youth inseam graded.

1724 Adult: S-2XL List Price 15.90 (Upcharge for 2XL)
1725 Youth: XS-L List Price 14.50

CONFORMS
TO NFHS
REGULATIONS

SLAM DUNK

Wicking uniforms
in power colors

COORDINATING
ADULT/YOUTH,
STYLE 1712|1713 PG. 7

LADIES BLOCK OUT JERSEY

1714



100% polyester wicking knit • Ladies' fit • Pad print label
• Self-fabric V-neck collar • Contrast color side panels
• Conforms to NFHS regulations.

1714 Ladies: S-2XL List Price 15.90 (Upcharge for 2XL)

For Youth sizes, see style 1713 on PG. 7.



BLACK/
WHITE

RED/
WHITE

ROYAL/
WHITE

NAVY/
WHITE

LIME/
SLATE

SLATE/
WHITE

POWER
YELLOW/
SLATE

POWER
BLUE/
SLATE

POWER
ORANGE/
SLATE

BLOCK OUT SHORT

1715

1716



100% polyester wicking knit • Pad print label
• Contrast color side panel with diamond shaped
insert • Full-cut • Covered elastic waistband with
inside drawcord • 9-inch inseam • Youth inseam graded.

1715 Adult: S-2XL List Price 15.90 (Upcharge for 2XL)

1716 Youth: S-L List Price 13.90

6093/6092/6091/6090
COLOR BLOCK CREW SOCK
FOR FULL DESCRIPTION,
SEE PG. 34



1714

1715

9-INCH
(YOUTH
INSEAM
GRADED)
PRO CUT

LADIES BASKETBALL

CONFORMS
TO NFHS
REGULATIONS



FULLY
REVERSIBLE



9-INCH
(YOUTH INSEAM GRADED)
PRO CUT

COORDINATING ADULT/YOUTH, STYLE 685|686 PG. 2

LADIES REVERSIBLE WICKING GAME JERSEY

687



Color side is 100% polyester wicking knit • White side is 100% polyester wicking tricot • Ladies' fit • Fully reversible • Self-fabric V-neck collar • Each layer has two contrast color V-shaped side panels • Each layer hemmed separately for embellishment • Outside locker label • Conforms to NFHS regulations.

687 Ladies: S-2XL List Price 32.40 (Upcharge for 2XL)



REVERSIBLE WICKING GAME SHORT

691

692



Color side is 100% polyester wicking knit • White side is 100% polyester wicking tricot • Fully reversible • Full-cut • Covered elastic waistband with inside drawcord • Each layer has two contrast color V-shaped side panels • 9-inch inseam • Youth inseam graded.

691 Adult: S-3XL List Price 34.50 (Upcharge for 2XL-3XL)

692 Youth: S-L List Price 33.20

AVAILABLE IN 18 COLORS

COORDINATING ADULT/YOUTH, STYLE 703|704 PG. 19

LADIES TRAINING TANK

1705

1706



100% polyester wicking knit • Ladies' fit • Heat sealed label • Self-fabric binding at neck and armholes.

1705 Ladies: XS-2XL Call for price

1706 Girls: S-L Call for price



VALUE PRICE



147

147

BACK



FULLY REVERSIBLE

**COORDINATING ADULT/YOUTH,
STYLE 148|149 PG. 11**

LADIES REVERSIBLE WICKING TANK

147



Two layers of 100% polyester wicking knit • Ladies' fit • Fully reversible for wearing on either side • Bottom hem finished separately for embellishment • Outside locker label.

147 Ladies: S-2XL List Price 12.50 (Upcharge for 2XL)

For Youth sizes, see style 149 on PG. 11.





790

VALUE PRICE

1790
LADIES
FIT



1420

9-INCH
(YOUTH
INSEAM
GRADED)
PRO CUT



1425

VALUE PRICE

7-INCH
(YOUTH
INSEAM
GRADED)
PRO CUT

WICKING T-SHIRT

790

791



100% polyester wicking knit • Heat sealed label
• Self-fabric collar • Set-in sleeves.

790 Adult: S-6XL Call for pricing

791 Youth: XS-XL Call for pricing

*Available in 4XL-6XL



LADIES WICKING T-SHIRT

1790

1791



Ladies' fit • Self-fabric V-neck collar.

1790 Ladies: XS-3XL Call for pricing

1791 Girls: S-L Call for pricing



TRAINING SHORT
& OCTANE SHORT

1420

1421

1425

1426



100% polyester wicking knit • Full-cut • Heat sealed label • Covered elastic waistband with inside drawcord • 7-inch inseam on 1425/1426

• 9-inch inseam on 1420/1421 • Youth inseam graded.

1420 Adult: S-3XL Call for pricing

1421 Youth: S-L Call for pricing

1425 Adult: S-3XL Call for pricing

1426 Youth: XS-L Call for pricing





VALUE PRICE

1788
LADIES
FIT

WICKING LONG SLEEVE T-SHIRT

788 789



100% polyester wicking knit • Heat sealed label • Self-fabric collar and cuffs
• Set-in sleeves • Pad print label.

788 Adult: S-3XL Call for pricing
789 Youth: S-L Call for pricing

LADIES WICKING LONG SLEEVE T-SHIRT

1788 1789



Ladies' fit • Self-fabric V-neck collar.

1788 Ladies: XS-3XL Call for pricing
1789 Girls: S-L Call for pricing

*Orange, Maroon, Gold, Kelly, Dark Green, and Vegas Gold only available in Adult/Youth. **Power Pink only available in Ladies.



VALUE PRICE

1705
LADIES
FIT

TRAINING TANK

703 704 1705 1706



100% polyester wicking knit • Ladies' fit on style 1705
• Heat sealed label • Self-fabric binding at neck and armholes.

703 Adult: S-3XL Call for pricing
704 Youth: S-L Call for pricing
1705 Ladies: XS-2XL Call for pricing
1706 Girls: S-L Call for pricing

*Power Pink only available in Ladies/Girls.



HYPERFORM COMPRESSION

Designed to wear comfortably & maintain shape



HYPERFORM COMPRESSION SHORT SLEEVE SHIRT **2600** **2601**



84% polyester/16% spandex knit • Odor resistant • Wicks moisture • Ultra tight fit • Pad print label • Self-fabric collar • Raglan sleeves • 4-way stretch fabric allows for greater mobility and maintains shape • Flatlock stitching provides comfort and resists chafing.

2600 Adult: S-3XL List Price 21.00 (Upcharge for 2XL-3XL)
2601 Youth: S-L List Price 19.00



HYPERFORM COMPRESSION SLEEVELESS SHIRT **2602** **2603**



84% polyester/16% spandex knit • Odor resistant • Wicks moisture • Ultra tight fit • Pad print label • Self-fabric collar • 4-way stretch fabric allows for greater mobility and maintains shape • Flatlock stitching provides comfort and resists chafing.

2602 Adult: S-3XL List Price 19.00 (Upcharge for 2XL-3XL)
2603 Youth: S-L List Price 17.00





1724
PG. 9

2604

TRAINING COMPRESSION



HYPERFORM COMPRESSION LONG SLEEVE SHIRT

2604

2605



84% polyester/16% spandex knit • Odor resistant • Wicks moisture • Ultra tight fit • Pad print label • Self-fabric collar • Raglan sleeves • 4-way stretch fabric allows for greater mobility and maintains shape • Flatlock stitching provides comfort and resists chafing.

2604 Adult: S-3XL List Price 24.00 (Upcharge for 2XL-3XL)
2605 Youth: S-L List Price 22.00





KINERGY LONG SLEEVE TEE

2807



100% polyester heathered wicking knit
 • Cationic dye used to create heathered look reduces chance of dye migration

• Pad print label • Self-fabric crew neck collar • Set-in sleeves.

2807 Adult: S-3XL List Price 17.50 (Upcharge for 2XL-3XL)



DIGI CAMO WICKING LONG SLEEVE T-SHIRT

2788

2789



100% polyester wicking printed knit • Roller printed to reduce chance of dye migration • Pad print label • Self-fabric collar and cuffs • Set-in sleeves.

2788 Adult: S-3XL List Price 19.00 (Upcharge for 2XL-3XL)
2789 Youth: S-L List Price 17.00



MOD CAMO WICKING TEE

1805

1806



100% polyester wicking printed knit • Roller printed to reduce chance of dye migration • Pad print label • Self-fabric collar • Set-in sleeves.

1805 Adult: S-3XL List Price 14.50 (Upcharge for 2XL-3XL)
1806 Youth: S-L List Price 13.90



MOD CAMO LONG SLEEVE WICKING TEE

1807

1808



100% polyester wicking printed knit • Roller printed to reduce chance of dye migration • Pad print label • Self-fabric collar • Set-in sleeves.

1807 Adult: S-3XL List Price 19.00 (Upcharge for 2XL-3XL)
1808 Youth: S-L List Price 17.00





BACK



THUMBHOLE



POLY/SPANDEX
BRUSHED BACK KNIT

90% polyester/10% spandex knit with brushed inner layer for a soft feel. Moisture management wicks sweat while 4-way stretch allows for ease of motion

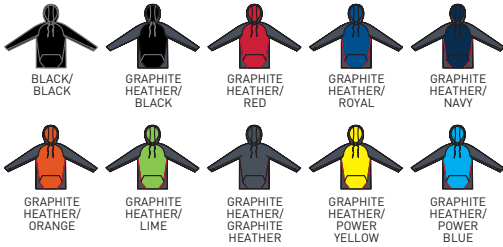
ZEAL HOODY

4762



Brushed back 90% polyester/10% spandex • Soft brushed back poly/spandex knit offers 4-way stretch • Wicks moisture • Heat sealed label • Scuba hood • Drawcord in hood on Adult sizes S-3XL only • Raglan sleeves with thumbholes for warmth • Contrast front panel and hood lining • Three-needle raglan and side seams • Front pouch pocket • Open bottom.

4762 Adult: XS-3XL List Price 46.90 (Upcharge for 2XL-3XL)



4762

OUTERWEAR/WARMUPS

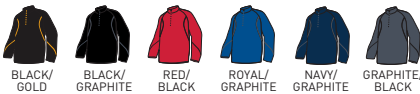
ZEAL PULLOVER

4760



Brushed back 90% polyester/10% spandex knit • Soft brushed back poly/spandex knit offers 4-way stretch • Wicks moisture • Heat sealed label • Contrast color half-zip pullover style • Raglan sleeves • Contrast color inserts on sleeves and front • Open bottom.

4760 Adult: S-3XL List Price 46.90 (Upcharge for 2XL-3XL)



RIVAL JACKET

7710 7711 7712

Heavyweight 100% polyester matte brushed tricot • Ladies' fit on style 7712
 • Front zipper • Contrast color inserts on front and sleeve, with contrast piping
 • Raglan sleeves • Two angled welt pockets • Elastic cuffs • Open bottom.

- 7710 Adult: S-2XL List Price 35.00 (Upcharge for 2XL)
- 7711 Youth: S-L List Price 32.90
- 7712 Ladies: XS-2XL List Price 35.00 (Upcharge for 2XL)



BLACK/
SLATE/
WHITE

RED/
SLATE/
WHITE

ROYAL/
SLATE/
WHITE

NAVY/
SLATE/
WHITE

MAROON/
SLATE/
WHITE

DARK
GREEN/
SLATE/
WHITE

SLATE/
ORANGE/
WHITE

SLATE/
LIME/
WHITE

SLATE/
POWER
BLUE/
WHITE

SLATE/
POWER
YELLOW/
WHITE

SLATE/
POWER
PINK/
WHITE



7712
LADIES
FIT

7714

RIVAL PANT

7714 7715 7716

R Heavyweight 100% polyester matte brushed tricot • Ladies' fit on style 7716 • Covered elastic waistband with inside drawcord • Side seam pockets • Contrast color side insert with contrast color piping • Zipper on outside lower leg.

- 7714 Adult: S-2XL List Price 33.90 (Upcharge for 2XL)
- 7715 Youth: S-L List Price 31.90
- 7716 Ladies: XS-2XL List Price 33.90 (Upcharge for 2XL)



BLACK/
SLATE/
WHITE

SLATE/
SLATE/
WHITE

SLATE/
ORANGE/
WHITE

SLATE/
LIME/
WHITE

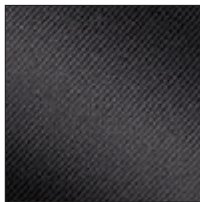
SLATE/
POWER
YELLOW/
WHITE

SLATE/
POWER
PINK/
WHITE

SLATE/
POWER
BLUE/
WHITE



7716
LADIES
FIT



MATTE BRUSHED TRICOT

5023

RIVAL
SPORT SHIRT

5024

LADIES RIVAL
SPORT SHIRT



To see our full offering of
 Sport Shirts, visit us online at
www.augustasportswear.com

MEDALIST JACKET & PANT

Available in 23 colors



MEDALIST JACKET

4390 4391 4392

Heavyweight 100% polyester brushed tricot • Ladies' fit on style 4392 • Front zipper • Contrast color inserts on front • Raglan sleeves • Front seam pockets • Elastic cuffs and bottom band • Open bottom on Ladies' fit.

4390 Adult: S-2XL List Price 31.90 (Upcharge for 2XL)

4391 Youth: S-L List Price 29.90

4392 Ladies: S-2XL List Price 31.90 (Upcharge for 2XL)

*Available in Ladies only.

MEDALIST PANT

7755 7756 7752

R Heavyweight 100% polyester brushed tricot • Ladies' fit on style 7752 • Covered elastic waistband with inside drawcord • Side seam pockets • Contrast color side inserts • Zipper on outside lower leg.

7755 Adult: S-2XL List Price 29.90 (Upcharge for 2XL)

7756 Youth: S-L List Price 27.00

7752 Ladies: S-2XL List Price 29.90 (Upcharge for 2XL)

*Available in Ladies only.



OUTERWEAR/WARMUPS

AUGUSTASPORTSWEAR.COM

TOUR DE FORCE JACKET

7722 7723 7724

Heavyweight 100% polyester matte brushed tricot • Ladies' fit on style 7724
 • Front zipper • Contrast color inserts on bottom of sleeve and side panel, with white insert on sleeve • Raglan sleeves • Front pockets • Half elastic cuffs • Open bottom.

7722 Adult: S-3XL List Price 31.90 (Upcharge for 2XL-3XL)
 7723 Youth: S-L List Price 29.90
 7724 Ladies: S-2XL List Price 31.90 (Upcharge for 2XL)



TRADITIONAL RELAXED FIT PANTS

Available in both
Adult and Ladies sizes



BACK

7726

RELAXED
FIT

7728

RELAXED
FIT



SOLID BRUSHED TRICOT PANT

7726 7727 7728

R Heavyweight 100% polyester matte brushed tricot (Relaxed fit)
 • Ladies' fit on style 7728 • Covered elastic waistband with inside drawcord • Side seam pockets • Back yoke • Zipper on outside lower leg.

7726 Adult: S-3XL List Price 29.00 (Upcharge for 2XL-3XL)
 7727 Youth: S-L List Price 27.00
 7728 Ladies: S-2XL List Price 29.00 (Upcharge for 2XL)



BLACK

AVAIL JACKET

3500 **3501** **3502**



Outer shell of 100% matte micro polyester • Lined with 100% polyester taffeta • Ladies' fit on style 3502 • Front zipper • Contrast color inserts at chest and on sleeve • Set-in sleeves • Two angled welt pockets • Half elastic cuffs • Open bottom.

- 3500** Adult: S-2XL List Price 35.90 (Upcharge for 2XL)
- 3501** Youth: S-L List Price 33.90
- 3502** Ladies: XS-2XL List Price 35.90 (Upcharge for 2XL)

3500



3502
LADIES
FIT

AVAIL PANT

3504 **3505** **3506**



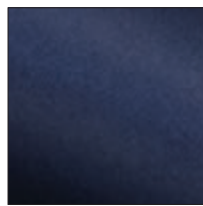
Outer shell of 100% matte micro polyester • Lined with 100% taffeta and 100% polyester mesh • Ladies' fit on style 3506 • Covered elastic waistband with inside drawcord • Side seam pockets • Contrast color side inserts • Zipper on outside lower leg.

- 3504** Adult: S-2XL List Price 31.90 (Upcharge for 2XL)
- 3505** Youth: S-L List Price 29.00
- 3506** Ladies: XS-2XL List Price 31.90 (Upcharge for 2XL)

3504



3506
LADIES
FIT



MATTE MICRO POLYESTER

1000/1001
AVAIL CREW

1002/1003
LADIES AVAIL
JERSEY



**To see our full Avail Collection,
visit us online at
www.augustasportswear.com**

PREMIER JACKET

3700 3710



Outer shell of 100% polyester diamond tech • Lined with 100% polyester taffeta • Ladies' fit on style 3710 • Front zipper • Contrast color shoulder and front inserts • Set-in sleeves • Front pockets • Elastic cuffs • Open bottom.

3700 Adult: XS-3XL List Price 41.90 (Upcharge for 2XL-3XL)

3710 Ladies: XS-2XL List Price 41.90 (Upcharge for 2XL)



STYLE & FUNCTION

Diamond Tech fabric is water-resistant and ultra-soft to the touch

SOLID PANT

3705 3715



Outer shell of 100% polyester diamond tech • Lined with 100% polyester taffeta and 100% polyester mesh • Ladies' fit on style 3715 • Covered elastic waistband with inside drawcord • Side seam pockets • Zipper on outside lower leg • Single-needle hemmed bottom.

3705 Adult: XS-3XL List Price 37.90
(Upcharge for 2XL-3XL & Tall sizes)

TALL Adult: LT-3XLT

3715 Ladies: XS-2XL List Price 37.90
(Upcharge for 2XL & Tall sizes)

TALL Ladies: MT-2XLT

***Available in Tall**

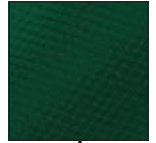




DIAMOND TECH



DIAMOND TECH



DRIVE PULLOVER

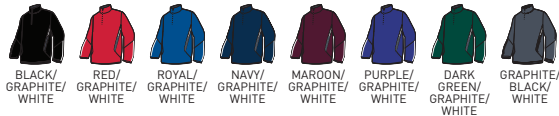
3720



3705|3715
pg. 28

Outer shell of 100% polyester diamond tech • Lined with 100% polyester taffeta
• Half-zip pullover style • Contrast color front and sleeve inserts • Set-in sleeves
• Front pockets • Half-elastic cuffs • Open bottom.

3720 Adult: XS-3XL List Price 41.90 (Upcharge for 2XL-3XL)



3730



3732



ROAR PULLOVER

3745

3746



3705|3715
pg. 28

Outer shell of 100% polyester diamond tech • Lined with 100% polyester taffeta
• Rib knit V-neck collar • Contrast color shoulder and side inserts with contrast piping • Set-in sleeves • Front pockets • Elastic cuffs • Open bottom with elastic drawcord adjustable through pocket.

3745 Adult: S-4XL List Price 38.50 (Upcharge for 2XL-4XL)
3746 Youth: S-L List Price 36.50



FURY JACKET

3730

3732



3705|3715
pg. 28

Outer shell of 100% polyester diamond tech • Lined with 100% polyester taffeta
• Ladies' fit on style 3732 • Center front zipper • Contrast color sleeve and front inserts with contrast piping • Raglan sleeves • Front pockets • Half elastic cuffs
• Open bottom.

3730 Adult: XS-3XL List Price 41.90 (Upcharge for 2XL-3XL)
3732 Ladies: XS-2XL List Price 41.90 (Upcharge for 2XL)





EDGE PULLOVER

5542 5543



100% polyester performance wicking fleece
 • Crew neck with front detail • Set-in sleeves
 • Contrast color three-needle stitching accent on shoulders, sleeves, and body • Curved hem bottom.

5542 Adult: S-3XL List Price 31.00
 (Upcharge for 2XL-3XL)
 5543 Youth: S-L List Price 29.00



MOD CAMO HOODY

5538 5539



100% polyester performance wicking fleece • 100% polyester printed wicking knit side inserts, piping, and hood lining features Mod Camo print • Roller printed for easy embellishment reduces chance of dye migration • Drawcord in hood on Adult sizes only • Raglan sleeves • Self-fabric cuffs • Front pocket with an interior kangaroo pocket.

5538 Adult: S-3XL List Price 39.90
 (Upcharge for 2XL-3XL)
 5539 Youth: M-L List Price ~~Was 37.90~~ Now 35.90





NEW
LOWER
PRICE

SLEET HOODY

5532

5533



100% polyester performance wicking fleece • 100% polyester propelit micromesh hood lining • Contrast color propelit micromesh hood lining • Contrast color stitching on pocket and hood • Raglan sleeves • Self-fabric cuffs • Front pocket with an exterior kangaroo pocket.

5532 Adult: S-3XL List Price 39.90 (Upcharge for 2XL-3XL)
5533 Youth: M-L List Price ~~Was 37.90~~ Now 35.90



SLEET HOODY

100% polyester propelit micromesh hood lining



BACK

5533



1431

FLEECE

PLAY LIKE THE PROS

The Striped Up Hoody wicks away moisture while you play

STRIPED UP HOODY

5518 5519



100% polyester performance wicking fleece • 100% polyester propelit micromesh hood lining and pockets • Contrast color propelit micromesh hood lining and pockets • Contrast color side panel with body color applied stripe • Set-in sleeves with self-fabric cuffs • Front welt pockets with an interior kangaroo pocket.

5518 Adult: S-3XL List Price ~~Was 37.50~~ Now 35.90 (Upcharge for 2XL-3XL)

5519 Youth: S-L List Price ~~Was 35.50~~ Now 31.90



AVAILABLE IN 15 COLORS

ZEST HOODY

5523 5524



100% polyester performance wicking fleece • Contrast color self-lined hood • Drawcord in hood on Adult sizes only • Contrast color sleeve inserts and piping • Set-in sleeves with self-fabric cuffs • Front pouch pocket • Open bottom.

5523 Adult: S-3XL List Price 39.90 (Upcharge for 2XL-3XL)

5524 Youth: S-L List Price ~~Was 37.90~~ Now 35.90





NEW LOWER PRICE

FANATIC HOODED SWEATSHIRT

5527



100% polyester performance wicking fleece • Contrast color self-lined hood • Drawcord in hood on Adult sizes S-3XL only • Contrast color front and sleeve inserts • Raglan sleeves

• Self-fabric cuffs • Front pouch pocket • Open bottom.

5527 Adult: XS-3XL List Price Was 39.90 Now 35.90 (Upcharge for 2XL-3XL)



NEW LOWER PRICE

WICKING FLEECE HOODED SWEATSHIRT

5505

5506



100% polyester performance wicking fleece • Self-lined hood • Drawcord in hood on Adult sizes only • Set-in sleeves • Front pouch pocket • Self-fabric cuffs and bottom band.

5505 Adult: S-4XL List Price Was 37.90 Now 33.90 (Upcharge for 2XL-4XL)

5506 Youth: S-L List Price Was 37.00 Now 29.90



NEW LOWER PRICE

VOLT HOODY

5460

5461



9 ounce 50% cotton/50% polyester smooth athletic fleece • Contrast color lined hood • Contrast color sleeve inserts • Drawcord in hood on Adult sizes only • Raglan sleeves • Double-needle coverstitched bottom band • Front pouch pocket • Rib-knit with cuffs and bottom band.

5460 Adult: S-3XL List Price Was 37.50 Now 35.90 (Upcharge for 2XL-3XL)

5461 Youth: S-L List Price Was 33.50 Now 31.90



NEW LOWER PRICE

CIRCUIT HOODY

5450

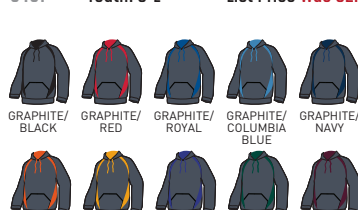
5451



9 ounce 50% cotton/50% polyester smooth athletic fleece • Contrast color lined hood, front and sleeve inserts • Drawcord in hood on Adult sizes only • Raglan sleeves • Front pouch pocket • Rib-knit with cuffs and bottom band.

5450 Adult: S-3XL List Price Was 36.30 Now 33.90 (Upcharge for 2XL-3XL)

5451 Youth: S-L List Price Was 32.30 Now 29.90





DIGI CAMO SLEEVE

2612 2613



84% polyester/16% spandex knit • Roller printed to reduce chance of dye migration • Odor-resistant • Wicks moisture • Ultra tight fit • Flatlock stitching

• Top hem with elastic to secure in place.

2612 Adult: S/M-L/XL Call for pricing
2613 Youth Call for pricing



WHITE DIGI



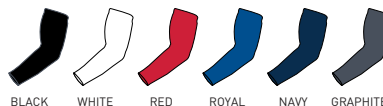
SOLID SLEEVE

2610 2611



84% polyester/16% spandex knit • Odor-resistant • Wicks moisture • Ultra tight fit • Flatlock stitching • Top hem with elastic to secure in place.

2610 Adult: S/M-L/XL Call for pricing
2611 Youth Call for pricing



BLACK WHITE RED ROYAL NAVY GRAPHITE



ARCH COMPRESSION REDUCES FATIGUE AND AIDS CIRCULATION.

EXTRA CUSHIONING AND SUPPORT IN AREAS OF THE FOOT AND ANKLE THAT ARE SUSCEPTIBLE TO RUBBING, IMPACT OR INJURY.

COLOR BLOCK CREW SOCK

6093 6092 6091 6090



55% polyester/22% nylon/20% cotton/3% spandex wicking yarn • Calf length • Heel/toe construction • Contrast color stripe on back • Extra cushioning and support in areas of the foot and ankle that are susceptible to rubbing, impact or injury • Left and right sock construction for a better fit • Arch compression reduces fatigue and aids circulation.

6093 Adult XL: 13-15 Call for pricing
6092 Adult: 10-13 Call for pricing
6091 Intermediate: 9-11 Call for pricing
6090 Youth: 7-9 Call for pricing



BLACK/WHITE BLACK/GOLD WHITE/BLACK RED/BLACK RED/WHITE ROYAL/WHITE ROYAL/GOLD NAVY/WHITE ORANGE/WHITE GOLD/WHITE PURPLE/WHITE POWER PINK/WHITE

WEAR YOUR TEAM NUMBER

Ideally used for basketball, lacrosse, football or volleyball



ROSTER SOCK

ROSTER SOCK

6097 / 6096



82% nylon/9% polyester/4% spandex/5% elastic wicking yarn
 • Calf length • Heel/toe construction • Contrast back insert features lightning bolts down the side • Breathable mesh at top of foot • Extra cushioning and support in areas of the foot and ankle that are susceptible to rubbing, impact or injury • Arch compression reduces fatigue and aids circulation • Ideally used for Basketball, Lacrosse, Football, or Volleyball.

• **Sock sold individually, not as a pair.**

6097 Adult: 10-13 Call for pricing
6096 Intermediate: 9-11 Call for pricing

BLACK/
 GRAPHITE/
 WHITE



*Socks are sold as separates





TRI-COLOR DRAWSTRING BACKPACK

1920

210-denier nylon with PU coating • Hemmed top with drawcord closure • Zippered front pocket • Black bottom with white accent piping • Web tab at bottom corner for reinforcement.

1920 14"W x 18"H

Call for pricing



TRES DRAWSTRING BACKPACK

1149

70-denier nylon with PVC coating, 600-denier polyester with PVC coating • Hemmed top with drawcord closure • Front mesh pocket • Zippered front pocket for easy embellishment.

1149 18"W x 14"H

Call for pricing



FULLY REVERSIBLE

REVERB BACKPACK

167

210-denier nylon with PU coating • Fully reversible from drawstring bag to tote bag • Hemmed top with drawcord closure • Zippered front pocket allows for embellishment • Bottom corner grommets for reinforcement • Web handles.

167 14"W x 18"H

Call for pricing



175

173

DRAWSTRING BACKPACK

175

173

70-denier nylon with PVC coating • Hemmed top with drawcord closure • Bottom corner grommets for reinforcement.

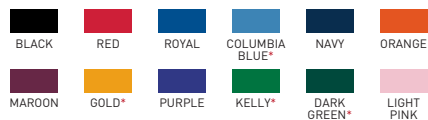
175 Large: 17"W x 20"H

Call for pricing

173 Small: 14"W x 18"H

Call for pricing

*Available in 173 only.



MESH POCKET

**Has water-resistant bottom
& is ideal for wet garments**

UNIVERSAL BACKPACK

1735

100% shiny hexagon patterned polyester with PVC coating and 100% 600-denier polyester with PVC coating • Water resistant rubberized bottom • Zippered main compartment with two zipper pulls • Interior valuables pocket • Interior laptop sleeve • Bottom zippered mesh pocket can be used for ball, shoes, or wet garments • Side zippered pockets with exterior mesh pockets • Padded back for support and comfort • Adjustable contoured padded shoulder straps.

1735 12"W x 19"H x 9"D Call for pricing



BLACK/
BLACK



RED/
BLACK



TRI-COLOR BALL BACKPACK

1831

600-denier polyester with PVC coating • Zippered main compartment with two zipper pulls • One angled white stripe on front sides • Separate black mesh zippered pockets on each side • Front black mesh pleated pocket with elastic binding can be used for volleyball, baseball, or soccer ball • Black web handle, reinforced at stress points • Inside zippered pocket • Inside plastic key holder hook • Padded back for support and comfort • Padded shoulder straps with adjustable side tabs • Contrast white piping trim.

1831 16½"W x 16½"H x 9"D Call for pricing



BLACK/
BLACK/
WHITE



RED/
BLACK/
WHITE



ROYAL/
BLACK/
WHITE



NAVY/
BLACK/
WHITE



GEAR BAG

511

420-denier nylon with PVC coating • Zippered main compartment has large U-shaped opening with two zipper pulls • Separate zippered compartments at each end • Black web handles with self-fabric handle wrapper, reinforced at stress points • Adjustable and detachable shoulder strap • Plastic hardware • Piping trim • Removable inside bottom board.

511 22"W x 11"H x 11"D Call for pricing



BLACK



RED



NAVY



MAROON



PURPLE



FOREST
GREEN



BLACK/
ORANGE



BLACK/
LIME



BLACK/
POWER
YELLOW



BLACK/
POWER
PINK



BLACK/
POWER
BLUE

